

3000 NET

Solar Screen



TEXSTYLE



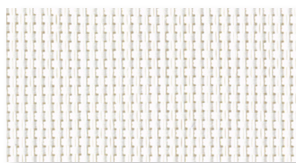
3000 NET

3000 NET Solar Screen fabrics offer a stylish and modern aesthetic for window treatments that minimize the negative effects of the sun, while preserving outward visibility. 3000 NET is the most widely used screen due to its 2x2 lightweight basket weave which offers ease of fabrication and versatility.

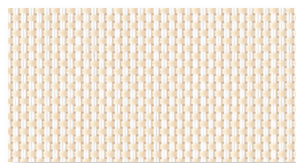
Features

- A unique manufacturing process delivers technically superior fabrics that are backed by a limited lifetime warranty
- Phthalate free promoting clean and safe indoor air quality
- Flame Retardant
- Available in five openness factors - Privacy, 1%, 3%, 5%, 10%
- Superior Noise Reduction Coefficient (NRC) of .55 for 1% openness
- Ideal for roller shades and panel track applications and is Railroadable

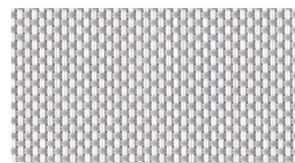
Colors



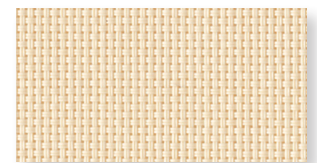
N001 WHITE/WHITE



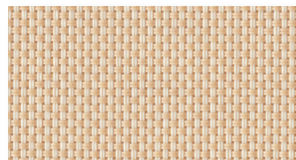
N002 WHITE/BEIGE



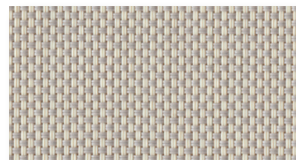
N003 WHITE/GRAY



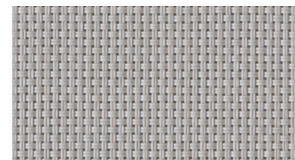
N201 BEIGE/BEIGE



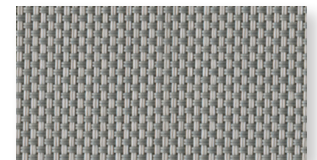
N202 BEIGE/SABLE



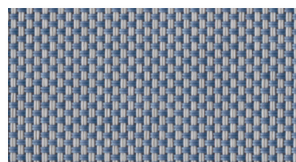
N203 BEIGE/GRAY



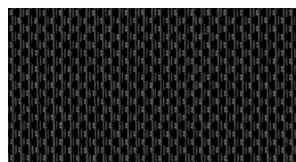
N301 GRAY/GRAY



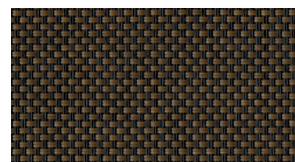
N302 GRAY/DARK GRAY



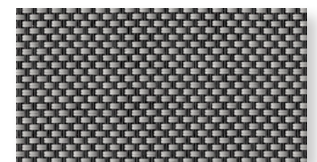
N304 GRAY/BLUE



N901 CHARCOAL/CHARCOAL



N902 CHARCOAL/BRONZE



N903 CHARCOAL/GRAY

3000 NET

Solar Screen



TEXTSTYLE

Color Range

	Privacy			1%			3%			5%			10%		
	78"	98"	118"	78"	98"	118"	78"	98"	118"	78"	98"	118"	78"	98"	118"
N001 White/White	x	x	x	x	x	x	x	x	x	x	x	x		x	x
N002 White/Beige	x	x	x	x	x	x	x	x	x	x	x	x		x	x
N003 White/Gray	x	x	x	x	x	x	x	x	x	x	x	x		x	x
N201 Beige/Beige						x		x	x	x*	x	x			
N202 Beige/Sable											x				
N203 Beige/Gray				x*	x	x	x	x	x	x*	x	x			
N301 Gray/Gray					x	x	x*	x	x		x	x			
N302 Gray/Dark Gray												x			
N304 Gray/Blue											x				
N901 Charcoal/Charcoal	x*	x	x	x	x	x	x	x	x	x*	x	x		x	x
N902 Charcoal/Bronze		x*	x		x*	x	x*	x	x	x*	x	x			
N903 Charcoal/Gray		x	x		x	x	x	x	x	x*	x	x			

* While supplies last

Specifications

	Privacy	1%	3%	5%	10%
Composition	25% Polyester, 75% PVC				
Openness Factor	Average < 1%	Average 1%	Average 3%	Average 5%	Average 10%
Weight	15.37 oz/yd ² (521 g/m ²)	15.28 oz/yd ² (518 g/m ²)	13.12 oz/yd ² (445 g/m ²)	12.39 oz/yd ² (420 g/m ²)	11.36 oz/yd ² (385 g/m ²)
Thickness	0.026 in (0.66mm)	0.027 in (0.68mm)	0.022 in (0.57mm)	0.022 in (0.55mm)	0.020 in (0.52mm)
Light fastness	Grade 8 (Blue Wool Scale)				
Average length	33 yd/roll (30m)				
Width	78.7" (2m), 98.4" (2.5m), 118" (3m)				
Cutting	Knife, Crush, Ultrasonic				
Welding	248°F (120°C) to 284°F (140°C), test first				
Railroadable	Yes, but should be done for all shades in the room to avoid visual variation				
Cleaning	Lightly vacuum or wipe with dry cloth to remove dust. Spot clean with clean white pencil eraser or gently wipe with warm soapy water and damp sponge. If wet, leave shade down to dry completely. Avoid solvents or test them in inconspicuous area first.				
Fire Classifications	NFPA 701, CA Title 19				
Environmental Standards	GREENGUARD Gold, Low VOC <0.5mg/m ³ : CDPH Standard Method v1.1-2010, Environmental Product Declaration, Health Product Declaration, REACH Compliant, RoHS Compliant, OEKO-TEX Standard 100, ISO 14001				

3000 NET

Solar Screen



TEXTSTYLE

Thermal and Optical Factors

COLOR		THERMAL FACTORS						OPTICAL FACTORS
		Ts	Rs	As	Shading Coefficient			Tv
					1/8" CL	1/4" CL	1/4" HA	
Privacy	N001 White/White	17	65	18	0.32	0.31	0.31	10
	N002 White/Beige	16	55	29	0.40	0.39	0.34	9
	N003 White/Gray	10	43	47	0.46	0.45	0.37	6
	N203 Beige/Gray	8	39	53	0.49	0.47	0.38	5
	N301 Gray/Gray	7	31	62	0.54	0.52	0.43	4
	N901 Charcoal/Charcoal	2	4	94	0.71	0.67	0.49	3
	N902 Charcoal/Bronze	2	5	93	0.70	0.65	0.50	3
	N903 Charcoal/Gray	3	15	82	0.64	0.61	0.45	2
	1%	N001 White/White	15	67	18	0.32	0.33	0.31
N002 White/Beige		13	62	25	0.35	0.35	0.33	9
N003 White/Gray		7	51	42	0.42	0.41	0.36	4
N201 Beige/Beige		8	48	44	0.32	0.31	0.22	7
N203 Beige/Gray		10	39	51	0.55	0.53	0.48	3
N301 Gray/Gray		1	33	66	0.54	0.55	0.47	2
N901 Charcoal/Charcoal		0	4	96	0.72	0.69	0.50	11
N902 Charcoal/Bronze		0	6	94	0.71	0.67	0.50	3
N903 Charcoal/Gray		3	13	84	0.62	0.59	0.50	2
3%	N001 White/White	17	65	18	0.32	0.31	0.31	10
	N002 White/Beige	16	55	29	0.40	0.39	0.34	9
	N003 White/Gray	10	43	47	0.46	0.45	0.37	6
	N201 Beige/Beige	12	52	36	0.42	0.41	0.35	8
	N203 Beige/Gray	8	39	53	0.49	0.47	0.38	5
	N301 Gray/Gray	7	31	62	0.54	0.52	0.43	4
	N901 Charcoal/Charcoal	2	4	94	0.71	0.67	0.49	3
	N902 Charcoal/Bronze	2	5	93	0.70	0.65	0.50	3
	N903 Charcoal/Gray	3	15	82	0.64	0.61	0.45	2
5%	N001 White/White	20	66	14	0.34	0.34	0.32	12
	N002 White/Beige	19	56	25	0.41	0.41	0.36	13
	N003 White/Gray	12	44	44	0.48	0.47	0.39	9
	N201 Beige/Beige	16	51	33	0.44	0.43	0.37	11
	N202 Beige/Sable	13	46	41	0.48	0.46	0.39	10
	N203 Beige/Gray	11	40	49	0.51	0.49	0.40	8
	N301 Gray/Gray	9	32	59	0.56	0.54	0.42	7
	N302 Gray/Dark Gray	8	24	68	0.61	0.58	0.45	7
	N304 Gray/Blue	10	24	66	0.61	0.59	0.45	8
	N901 Charcoal/Charcoal	5	5	90	0.73	0.69	0.51	6
	N902 Charcoal/Bronze	5	6	89	0.72	0.69	0.50	6
	N903 Charcoal/Gray	6	16	78	0.66	0.63	0.47	6
10%	N001 White/White	28	57	15	0.39	0.38	0.35	20
	N002 White/Beige	24	54	22	0.45	0.44	0.39	20
	N003 White/Gray	18	42	40	0.51	0.49	0.42	16
	N901 Charcoal/Charcoal	11	3	86	0.76	0.72	0.54	13

3000 NET

Solar Screen



Acoustical Performance

3000 NET	NRC RATING*	SAA RATING*
Privacy <1%	0.25	0.25
1%	0.55	0.55
3%	0.15	0.16
5%	0.10	0.10
10%	negligible	negligible

*Noise Reduction Coefficient (NRC) and Sound Absorption Average (SAA) tested to ASTM C423-17



STANDARD 100



LOW VOC



LIMITED LIFETIME WARRANTY



14001



9001



FR



PHTHALATE FREE



FRAGRANCE FREE



ANTI-BACTERIAL



ENERGY SAVING



REACH COMPLIANT



RoHS COMPLIANT



PRINTABLE