

Sanctuary

Designer Light Filtering & Blackout



TEXSTYLE



Sanctuary

Following the success of the Sanctuary Blackout collection, we proudly introduce Sanctuary Light Filtering.

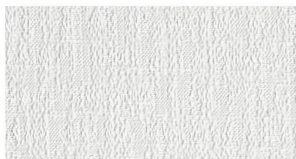
Sanctuary features a unique three-dimensional pattern in 11 colors available in both light filtering and blackout versions. This entire collection is available in a 118" width.

Designed for roller, roman, and panel blinds, Sanctuary delivers a seamless fabric solution for your interior.

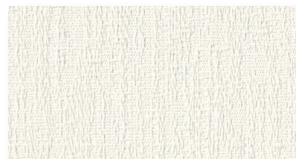
Features

- Available in 11 matching light filtering or blackout colors
- Blackout has a white backing for uniform appearance from the building's exterior
- The modern neutral color palette suits any decor
- Offered in a versatile 118" width
- GREENGUARD Gold Certified

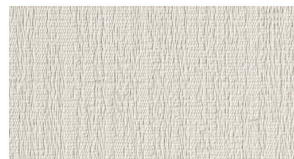
Colors



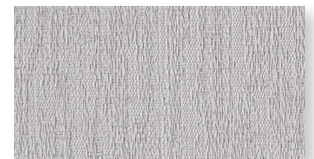
PLASTER



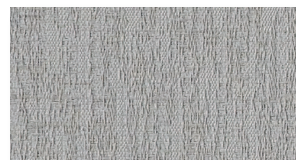
MARBLE



LIMESTONE



CERAMIC



TRUFFLE



FOSSIL



SUEDE



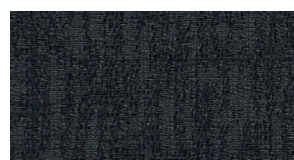
MINERAL



SLATE



BALTIC



LAVA

Sanctuary

Designer Light Filtering & Blackout



Specifications

	Light Filtering	Blackout
Composition	100% Polyester	100% Polyester with Acrylic Foam Coating
Openness	Approximately 3%	Blackout
Weight	6.05 oz/yd ² (205g/m ²)	12.68 oz/y ² (430g/m ²)
Thickness	0.016 in (.40mm)	0.024 in (0.60mm)
Light fastness	≥ 5 (Blue Wool Scale)	≥ 5 (Blue Wool Scale)
Average length	27.5 yd/roll (25m)	22yd/roll (20m)
Width	118" (3m)	
Cutting	Cold Cutting or Ultrasonic Cutting	
Welding	Tape Recommended. 320-356°F (160-180°C), Test first.	
Railroadable	No	
Cleaning	Surface dust can be removed with vacuum or a soft cloth	
Environmental Standards	GREENGUARD Gold, OEKO-TEX Standard 100, REACH Compliant, RoHS Compliant	

Thermal and Optical Factors

COLOR	THERMAL FACTORS			OPTICAL FACTORS
	Ts	Rs	As	Tv
Limestone Light Filtering	33	48	19	32
Plaster Light Filtering	35	52	13	35
Fossil Light Filtering	23	33	44	16
Mineral Light Filtering	34	48	18	33
Suede Light Filtering	31	43	26	28
Baltic Light Filtering	25	32	43	17
Lava Light Filtering	21	28	51	10
Slate Light Filtering	26	39	35	21
Truffle Light Filtering	26	41	33	22
Marble Light Filtering	50	48	2	50
Ceramic Light Filtering	32	36	32	30
*Blackout	0	75	25	0

*Tested to DIN EN 410: 2011. All others tested to ASTM E891.



PVC FREE



PHTHALATE FREE



FRAGRANCE FREE



REACH COMPLIANT



RoHS COMPLIANT



PRINTABLE