

### S45 Series Crank Gear (Optional)



1. Aluminum Tube - S45 (LIGHT / STANDARD / HD)
2. Auto Idler - S45
3. Gear Drive End Cap - S45
4. Gear - Small
5. Gear Bracket Set - VX
6. LX / VX Bracket Cover Cap - 40 & 55mm
7. Coupling Joint
8. Crank Control Arm [100, 150 & 200cm]
9. Crank Arm Support

#### S45 Crank Gear

The Crank Gear System brings a heavy weight operation to the S45 medium Rollease Acmeda range with the ability to carry up to 19 pounds.

#### Aesthetic Features

- Color coded hardware
- Slim round design

#### Functional Benefits

- Small gear offering 2.8:1 operating ratio.
- Detachable crank arm.
- Easy-Lock idle technology for simple two step installation.
- Optional securing arm support.
- Compatible with the Rollease Acmeda range of S45 aluminum tubes.
- Child safe control option.
- 9Kg (19.84lbs) Maximum shade weight capacity \*

\* Dependent on tube size

#### SYSTEM UPGRADES



CF FASCIA

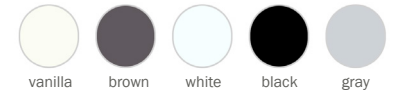
GUIDE WIRE

COUPLING



clutch, end cap color: white, gray, black  
 external hembar color finishes:  
 white, vanilla, gray, brown, black  
 Architectural and F56 hembar white and gray only  
 D30 and Edge side channel color: white, gray, black

#### Hardware Colors

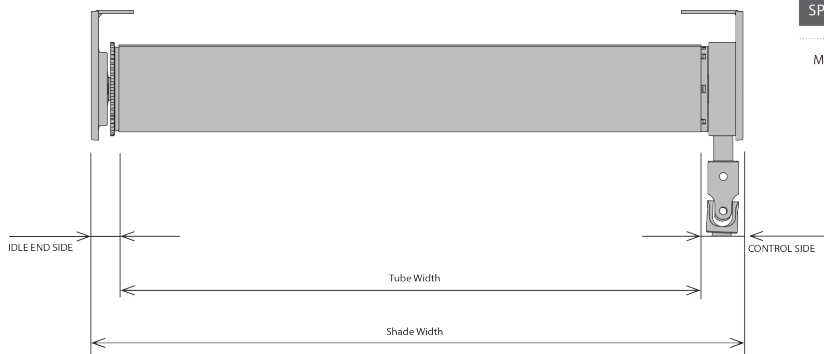


#### External Hembar Upgrades (Heat Sealed comes standard)



1. Internal 2. Architectural 3. F56 4. D30 5. Exposed (also used for fabric wrapped)

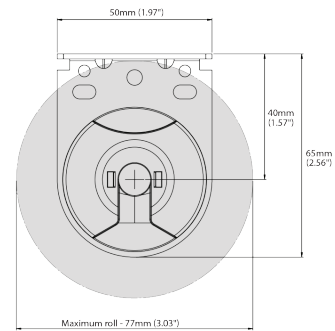
#### DEDUCTIONS



	IDLE END SIDE	CONTROL SIDE	OVERALL DEDUCTION
LX BRACKETS - with covers	14mm (0.55")	22mm (0.86")	36mm (1.41")
LX BRACKETS - without covers	13mm (0.51")	21mm (0.82")	34mm (1.33")

#### SPECIFICATIONS: S45 CRANK GEAR SYSTEM

#### MAX ROLL



#### ADD ON OPTIONS

#### EASY-LINK S45

